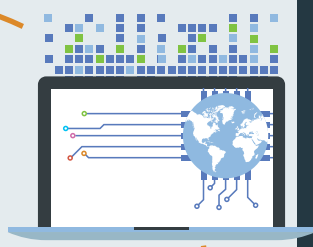


Bird & Bird & CyberBox & Prepare & Defend

The current response of the business sector to cyber risk is erratic and often misguided. When spurred to action there is a tendency to waste time, energy and money in searching for a 'silver bullet' and adopting a patchwork strategy in the misguided aspiration to cyber-attack-proof the system.

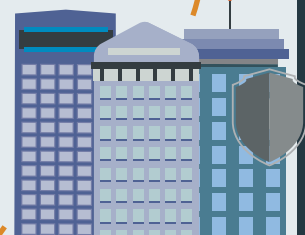
85%

85% of risk experts identify cyber attacks as the biggest threat to business in 2016



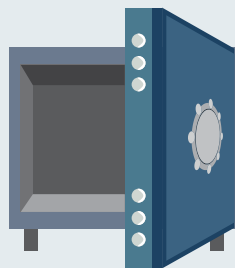
1/3

only 1 in 3 firms plan to increase investment in protective measures



9/10

9 in 10 large companies in the UK experienced a security breach in the past year



What to do?

There is no 'one size fits all' approach to cyber preparation.

Businesses should adopt an integrated, multidisciplinary approach to cyber resilience.

A multidisciplinary approach requires the balanced engagement of forensic IT specialists, penetration testers, lawyers, public relations and communications consultants, insurance brokers and strategic intelligence advisers.

CyberBox

To meet the challenge of finding a prudent, proportionate and effective way to improve cyber resilience we have established the multidisciplinary task force - CyberBox.

CyberBox is a multidisciplinary approach to cyber resilience planning.

The breadth of experience available in Cyberbox means we can offer a single point, integrated, bespoke solution to support your cyber resilience planning.

Our services include:

- Resilience evaluation and threat assessment and categorisation
- Response planning
- Communications and PR planning
- Insurance evaluation
- Penetration Testing and simulation exercises
- Training
- Fully integrated incident response support

We will help you decide and craft cyber resilience that is right for your business.

To find out more, contact a member of the CyberBox team to help you:



Simon Shooter

Partner

Tel: +44 (0)20 7982 6456

simon.shooter@twobirds.com

CyberBox



Insurance



Public relations and reputation management



Legal expertise



Cyber resilience analytics



Penetration testing, technical assurance, incident response